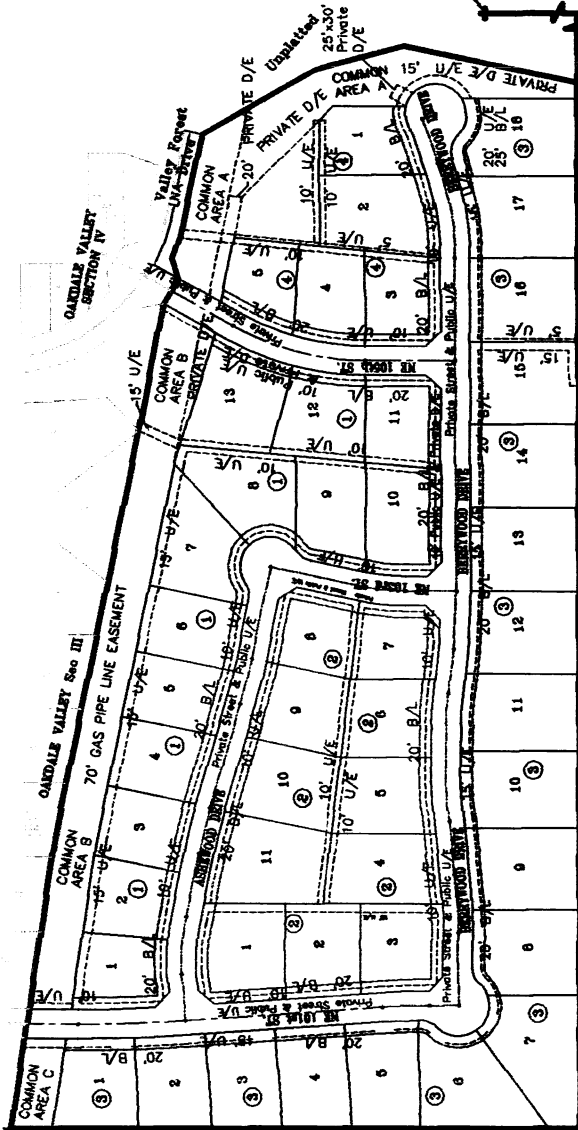
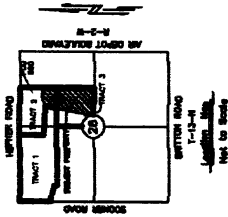


**Sales Plat**  
**HEIGHTS II AT OAKDALE VALLEY**  
 An Addition to the City of Oklahoma City  
 A Subdivision of Part of the NE 1/4, Sec. 28, T13N, R27W, E2W, L.M.,  
 Oklahoma County, Oklahoma



NW Corner of the West 1/2  
 of the NE 1/4 of  
 Section 28, T13N, R27W, L.M.

NE Corner of the NE 1/4  
 of the NE 1/4 of  
 Section 28, T13N, R27W, L.M.

**SALES PLAT**  
**Heights II at Oakdale Valley**  
 Oklahoma County, Oklahoma  
 Sheet 2 of 2

**ISCH & ASSOCIATES, INC.**  
 CIVIL ENGINEERING - LAND PLANNING - LAND SURVEYING  
 3600 S BOWLING, SUITE 205 - OKMORO, OKLAHOMA 73013  
 OFFICE (405) 348-1163 - FAX (405) 348-0861  
 Certificate of Authorization No. 1120 Exp. Date 6-30-09

**SALES PLAT ONLY**  
 Verify All Lot Dimensions, Easements  
 & Building Line Locations On Final  
 Plat As Filed Of Record