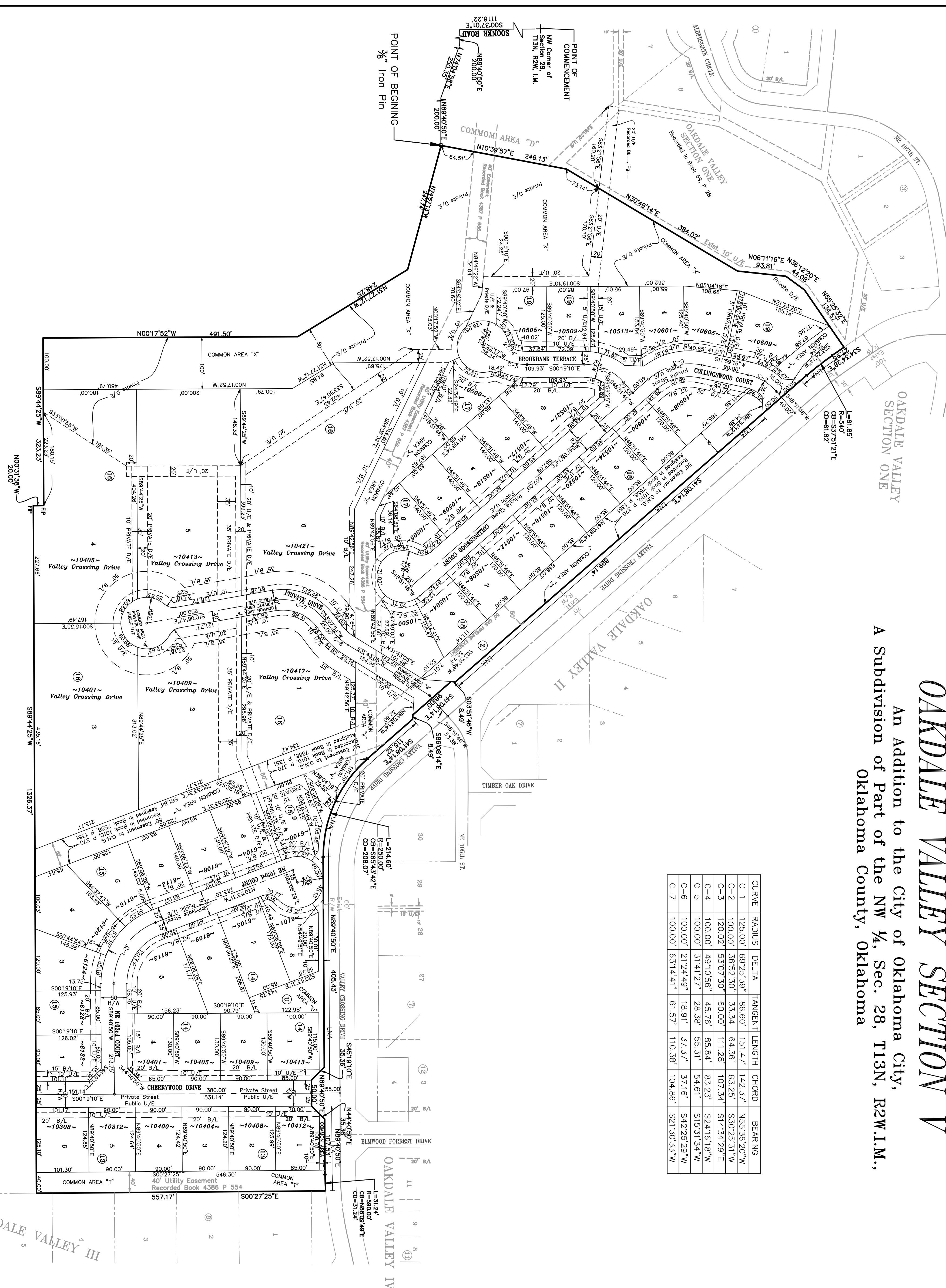
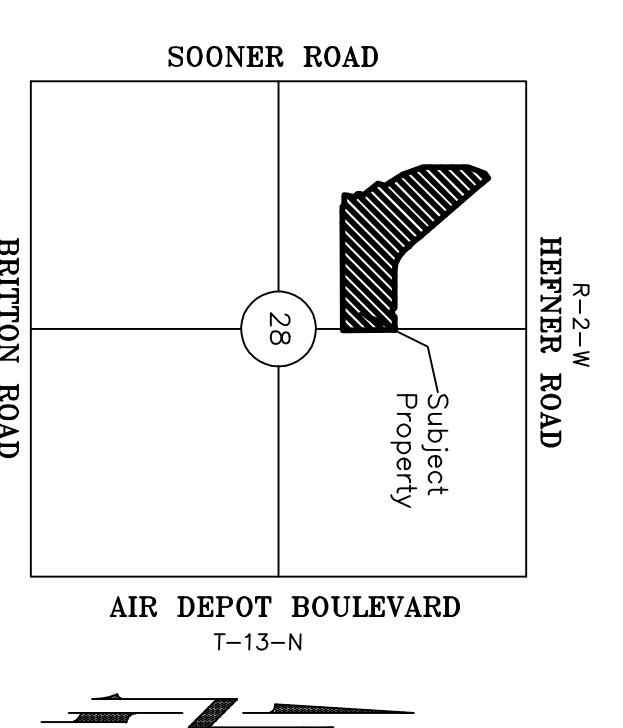


OAKDALE VALLEY SECTION V

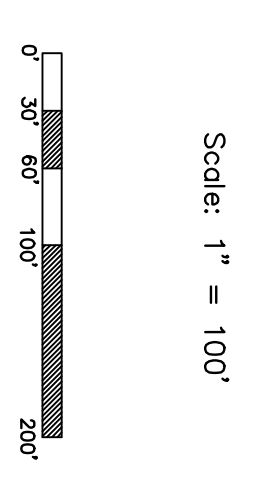
An Addition to the City of Oklahoma City,
A Subdivision of Part of the NW ¼, Sec. 28, T13N, R2W I.M.,
Oklahoma County, Oklahoma

CURVE	RADIUS	DELTA	TANGENT LENGTH	CHORD	BEARING
C-1	125.00'	69°25'39"	85.60'	151.47'	142.37' S53.36°20'W
C-2	100.00'	36°52'30"	33.34'	64.36'	53°02'53"W
C-3	120.02'	53°07'30"	60.00'	111.28'	107.34' S14.34°29'E
C-4	100.00'	49°10'56"	45.76'	85.84'	83.23' S24.16°18'W
C-5	100.00'	31°41'27"	28.38'	55.37'	54.61' S15.31°34'W
C-6	100.00'	21°24'49"	18.91'	37.37'	54°22'29'W
C-7	100.00'	63°14'41"	61.57'	110.38'	104.86' S21.30°33'W



Legend

- U/E ~ Utility Easement
- D/E ~ Drainage Easement
- LNA ~ Limits of No Access
- ~ Set Back
- ~ ~ Set Back



36 Acres
50 Lots

OAKDALE VALLEY SECTION V

Sales Plat Only
Verify All Lot Dimensions, Easements
& Building Line Locations On Final
Plat As Filed Of Record.
Sweetwater Plat Not Filed as of 3/04/2013